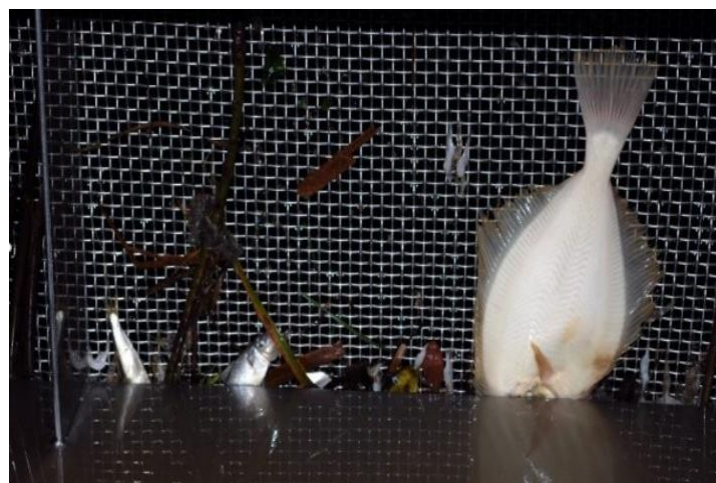
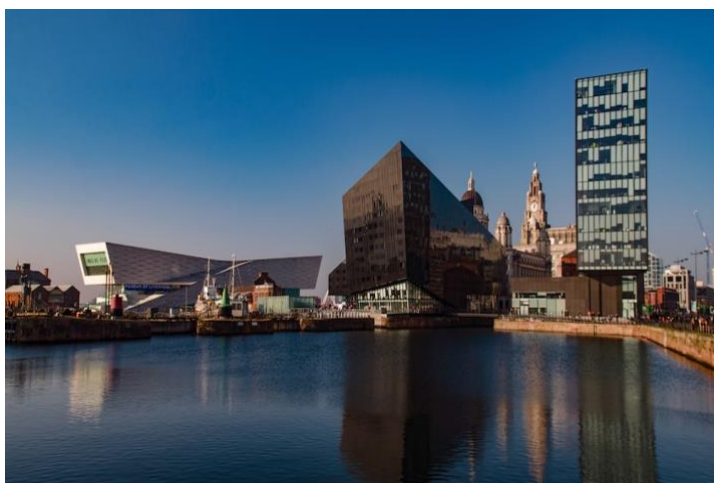


FISH IMPINGEMENT & ENTRAINMENT CONFERENCE

LIVERPOOL 2023



Institute of Fisheries
Management



Conference sponsors



Delegate Information



Liverpool City

Liverpool has a rich and diverse history and there are plenty of free museums within the city centre. To aid you in exploring this fantastic city you can download a map [here](#)

There is a very comprehensive guide to visiting Liverpool that can be found [here](#)

If you plan to use the bus network whilst in Liverpool you can download a bus route map [here](#) and also use [this website](#) to plan your journey and find timetables.

Liverpool has several world class museums and art galleries all of which are free to enter, find out more on [this website](#)



Accommodation

You can see a selection of city centre accommodation to suit a range of budgets [here](#) on the website.



Places to Eat and Drink

Liverpool has a choice of restaurants, cafes, pubs, and bars to rival anywhere in the world. From its historic Chinatown to high end fine dining, Liverpool has it all so why not take some time to explore what culinary delights it has to offer. You can use the Visit Liverpool website [here](#) to find something for all tastes.



Getting to Liverpool

Liverpool is served by a comprehensive transport network including the John Lennon airport.

By Train

Liverpool Lime Street station is just 2 minutes' walk from the Adelphi hotel and the city centre. More detail about the station can be found [here](#)

Liverpool Central station serves the Merseyrail network for local trains to the Wirral and Chester. The Merseyrail website can be found [here](#)

By Air

Liverpool John Lennon Airport

You can get a bus or a taxi from the airport very easily, the nearest trainline on the Merseyrail network is 3 miles from the airport, (please see the link above). The airport website details on transport and bus timetables can be found [here](#)

Manchester Airport

This is a larger international airport with flights to most international destinations. It has direct connections to Liverpool by train and bus, more details can be found [here](#)

By Road

There is parking for 300 cars at the Adelphi Hotel £13 for 24 hours; no height restrictions you can get directions via Google maps just search Brownlow Hill parking.

Liverpool city council also run some car parks in the city centre, details of which can be found [here](#)

There are also numerous other car parks within walking distance of the Adelphi hotel such as Park Bee and there website can be found [here](#)